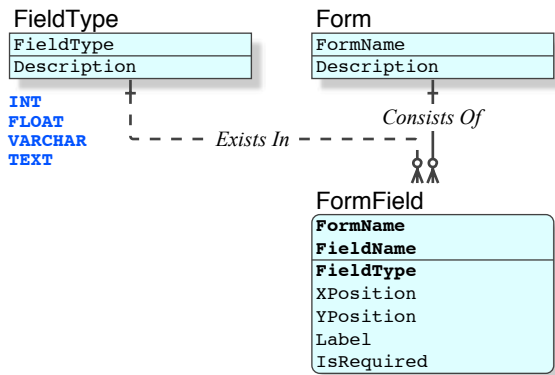
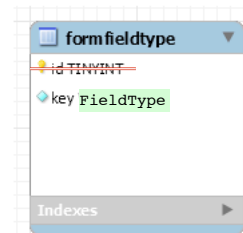


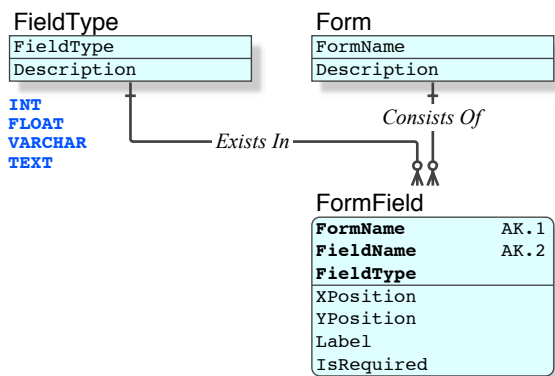
1 Basic Requirement (Relational)



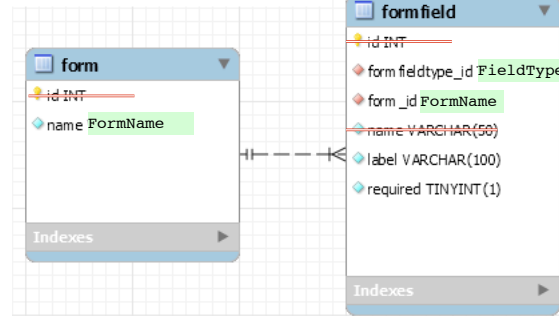
- Given requirement (model) elevated to Relation
- One additional column and one additional index eliminated, in each table



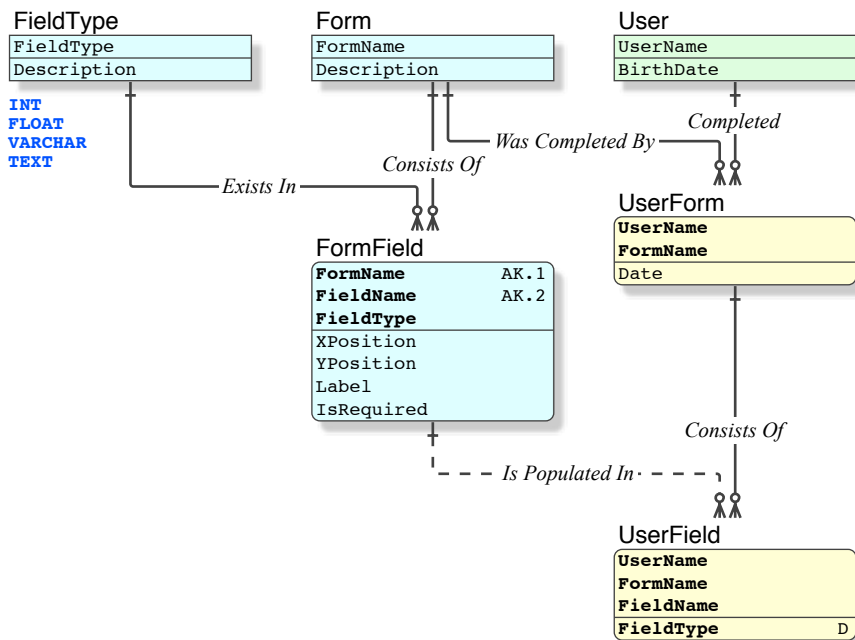
2 Key Required for Migration



- PK [1] moved to AK
- New PK [2] required for migration (control), lower in the data hierarchy
- Non-Identifying relation from FieldType changed to Identifying



3 Migrated Key is Discriminator



- Ordinary Exclusive Subtype structure
- FieldType is required for Discriminator hence required in the parent PK
- FieldType is not required in the PK hence it is a Non-Identifying relation
- UserField is CONSTRAINED TO FieldNames that exist in the applicable FormName

Entity Type

- Reference
- Identifying
- Transaction
- TransactionDetail
- History, Audit

- Subtype Exposition
- IDEFIX Anatomy (for the experienced)
- IDEFIX Introduction (for beginners)